



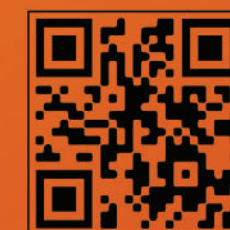
# PLANETECO

## PROFILES



### Store Locators

- |   |                   |
|---|-------------------|
| 📍 19 17 A St - Al Khabaisi, Deira, Dubai                      | ☎ +971 4 546 4564 |
| 📍 Al Quoz Industrial Area 2, Near Dubai Driving School, Dubai | ☎ +971 4 393 7216 |
| 📍 S112, Industrial Area, Industrial Area 2, Sharjah           | ☎ +971 6 527 0536 |
| 📍 Al Aweer, Ras Al Khor Industrial Area-2, Dubai              | ☎ +971 4 354 0781 |
| 📍 Al Nakheel, Deira, Dubai                                    | ☎ +971 4 222 4979 |
| 📍 DIP, Warehouse #73, Dubai Investment Park - 1, Dubai        | ☎ +971 4 885 5818 |
| 📍 M14, Musaffah Industrial, Abu Dhabi                         | ☎ +971 2 555 4647 |
| 📍 Unit 3 (15), Plot no 393, Jurf 1, Ajman                     | ☎ +971 6 767 5321 |



E : [info@planeteco.ae](mailto:info@planeteco.ae)

[www.planeteco.com](http://www.planeteco.com)





SIZES  
100MM, 50MM

**SS SKIRTING MIRROR/BRUSH FINISH**



SIZES  
12MM

**SS STAIR NOSING (BRUSH FINISH)**



SIZES  
10MM, 12MM, 15MM

**SS TILE TRIM (BRUSH FINISH)**



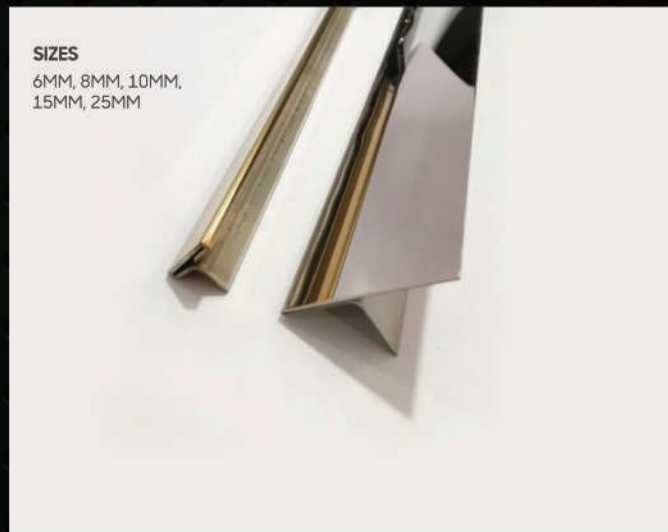
SIZES  
10MM, 12MM

**SS SQUARE TILE TRIM (BLACK)**



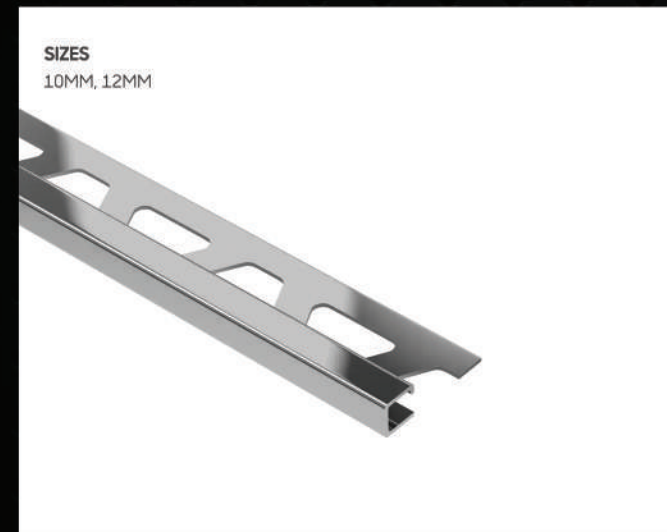
SIZES  
10.5MM, 12.5MM

**SS COUNTER-TOP (BRUSH FINISH)**



SIZES  
6MM, 8MM, 10MM,  
15MM, 25MM

**SS TEE (MIRROR FINISH)**



SIZES  
10MM, 12MM

**SS SQUARE TILE TRIM (MIRROR FINISH)**



SIZES  
10MM, 12MM

**SS SQUARE TILE TRIM (BRUSH FINISH)**



SIZES  
20MM, 26MM

**SS TEE (BRUSH FINISH)**



SIZES  
10MM, 12MM

**SS TILE TRIM (MIRROR FINISH)**



SIZES  
10MM, 12MM

**SS PROEDGE TILE TRIM (BLACK)**



SIZES  
10MM, 12MM

**SS PROEDGE TILE TRIM (MIRROR FINISH)**





SIZES  
10MM, 12MM

**SS PROEDGE TILE TRIM (BRUSH FINISH)**



SIZES  
10MM, 12MM

**SS L-SLIM EDGE TILE TRIM (MIRROR FINISH)**



SIZES  
3X10MM, 5X10MM

**U CHANNEL GROOVED**



SIZES  
10MM

**U CHANNEL (BRUSH FINISH)**



SIZES  
10MM, 12MM

**SS L-SLIM EDGE TILE TRIM (BRUSH FINISH)**



SIZES  
10MM, 12.5MM, 15MM, 20MM

**SS L TILE TRIM**



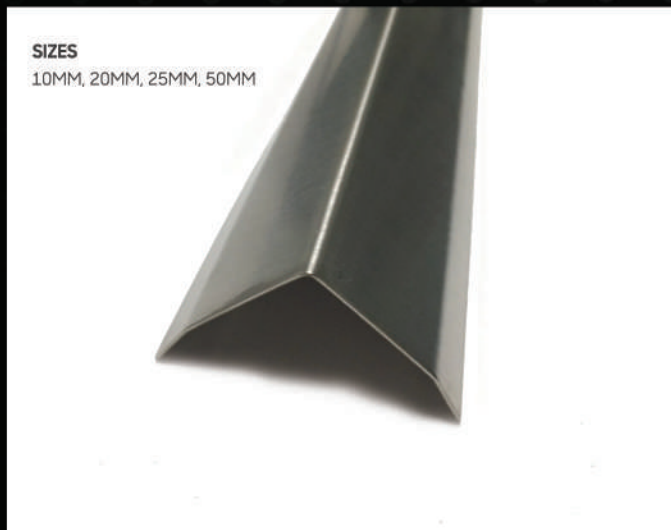
SIZES  
12H

**SS PROSLIDER (BRUSH FINISH)**



SIZES  
12H

**SS PROSLIDER (MIRROR FINISH)**



SIZES  
10MM, 20MM, 25MM, 50MM

**SS ANGLE**



SIZES  
10MM, 20MM, 25MM, 50MM

**SS ANGLE**



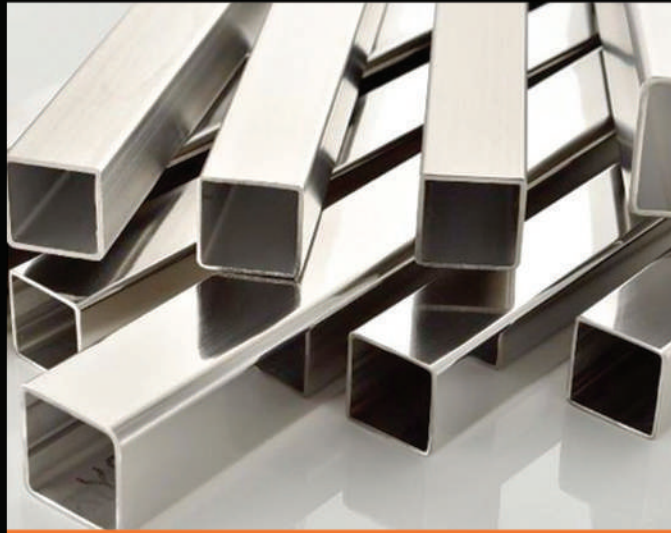
SIZES  
10MM, 12.5MM

**SS PROBOARD**



**SS RECTANGLE TUBE**





**SS SQUARE TUBE**



**SS STRIP FOR MARBLE**



SIZES  
10MM, 12MM

**ALUMINIUM PROEDGE TILE TRIM  
(BRUSH FINISH)**



SIZES  
10MM, 12.5MM

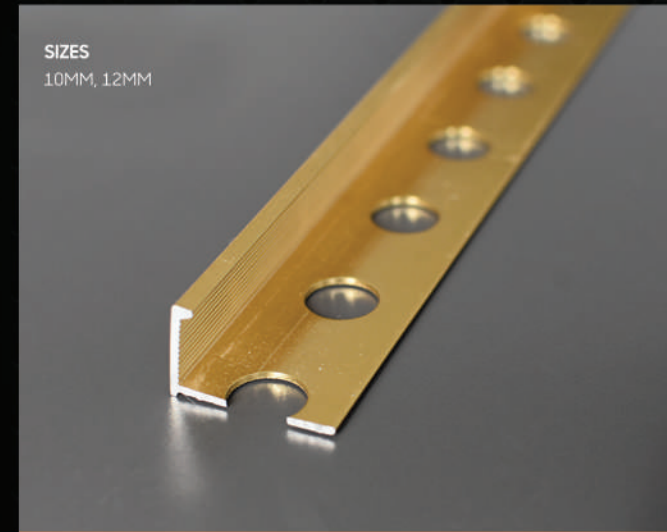
**ALUMINIUM SQUARE EDGE TILE TRIM  
(BRUSH FINISH)**



**SS FLAT BAR BRUSH FINISH**



**SS ROUND BAR**



SIZES  
10MM, 12MM

**ALUMINIUM L TILE TRIM (GOLD)**



SIZES  
10MM, 12MM

**ALUMINIUM L TILE TRIM (BRUSH FINISH)**



SIZES  
10MM, 12MM

**ALUMINIUM PROEDGE  
TILE TRIM (GOLD)**



SIZES  
10MM, 12.5MM

**ALUMINIUM SQUARE EDGE  
TILE TRIM (GOLD)**



SIZES  
41X18MMX2.7M

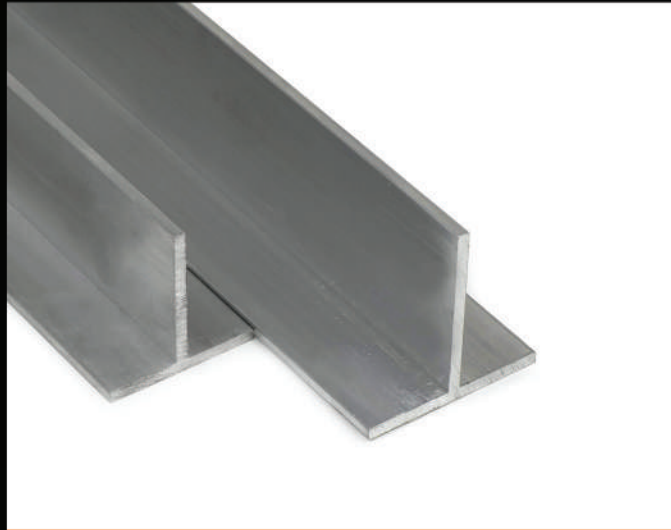
**ALUMINIUM STAIR NOSING WITH RUBBER**



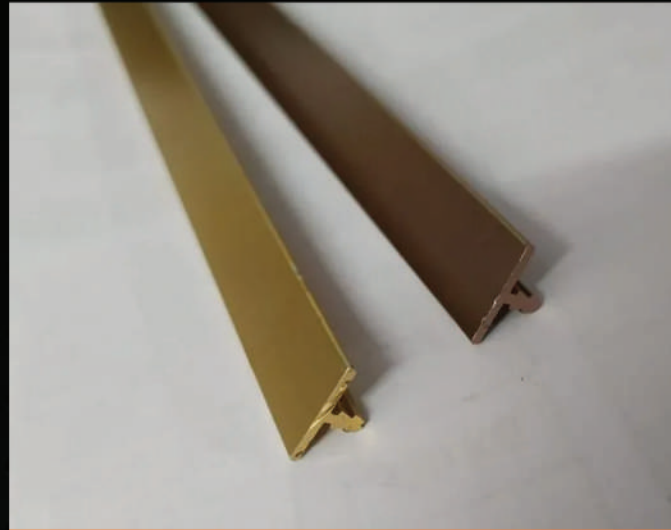
SIZES  
38MMX2.5MMX3.5M

**ALUMINIUM GROOVED ANGLE**





**ALUMINIUM T CHANNEL**



**ALUMINIUM T PROFILE**



**ALUMINIUM PUSH-IN SQUARE EDGE TRIM**



**ALUMINIUM QUARTER ROUND**



**ALUMINIUM CARPET ANGLE TRIM  
(GOLD, SILVER - MIRROR FINISH)**



**ALUMINIUM CARPET TRIM GOLD**



**ALUMINIUM RECTANGLE BOX**



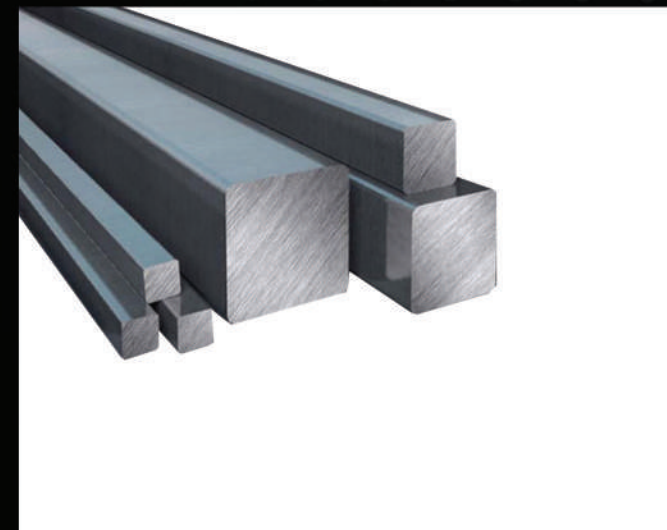
**ALUMINIUM SQUARE BOX**



**ALUMINIUM INNER TRIM**



**ALUMINIUM CARPET TRIM SILVER**



**ALUMINIUM SQUARE ROD**



**ALUMINIUM FLAT BAR**





**ALUMINIUM EXPANSION JOINT PROFILE  
(BEIGE, BLACK, GREY)**



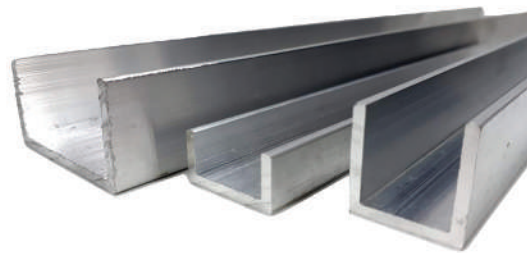
**SS CLIP FOR EXPANSION JOINT**



**ALUMINIUM ANGLE**



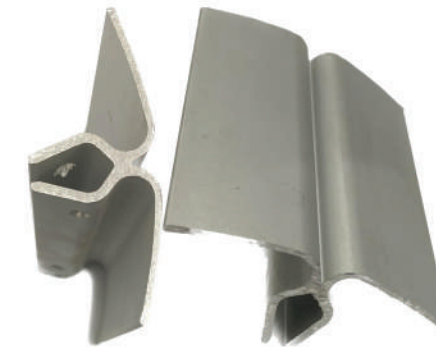
**TOP SECTION ALUMINIUM ANODIZED**



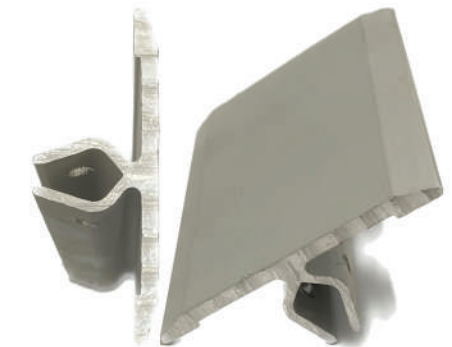
**ALUMINIUM U CHANNEL**



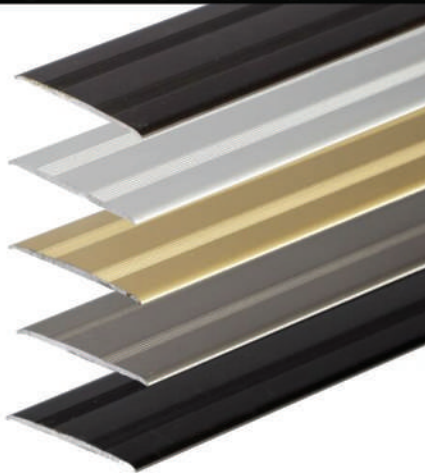
**ALUMINIUM W CHANNEL**



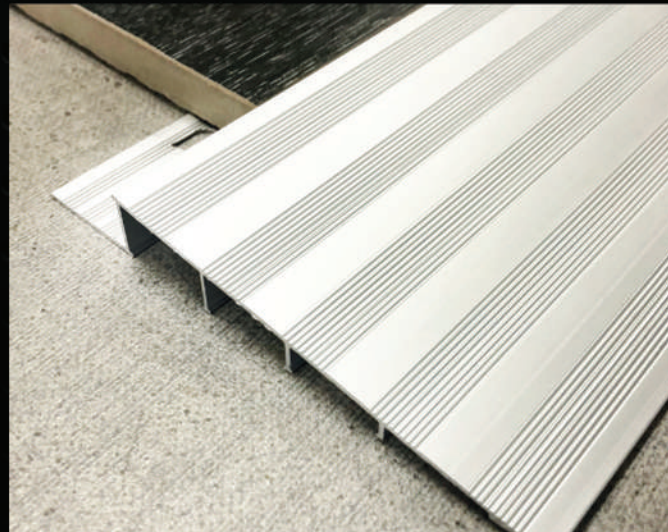
**ALUMINIUM EXPANSION  
JOINT COVER CK-01**



**ALUMINIUM EXPANSION  
JOINT COVER CK-02**



**ALUMINIUM COVER JOINT**



**ALUMINIUM RAMP**



**ALUMINIUM EXPANSION  
JOINT COVER CK-03**

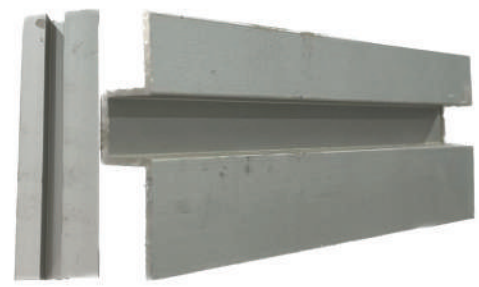


**ALUMINIUM EXPANSION  
JOINT COVER CK-05**





**ALUMINIUM EXPANSION  
JOINT COVER CK-35**



**OMEGA ALUMINIUM PROFILE**



**U PROFILE FOR  
POLY CARBONATE SHEET**



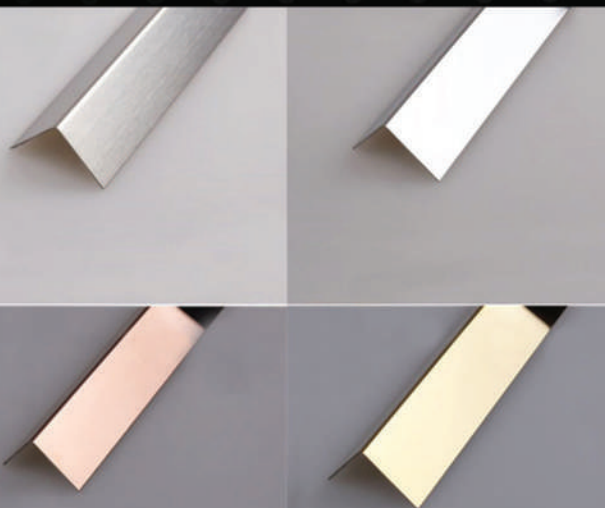
**H PROFILE FOR  
POLYCARBONATE SHEET**



**RUBBER FOR OMEGA PROFILE**



**PVC FLAT PROFILE (SILVER MIRROR, GOLD MIRROR,  
SILVER BRUSH FINISH, GOLD BRUSH FINISH)**



**PVC ANGLE (WHITE, SILVER MIRROR, GOLD MIRROR,  
SILVER BRUSH FINISH, GOLD BRUSH FINISH)**



**PVC TILE TRIM**